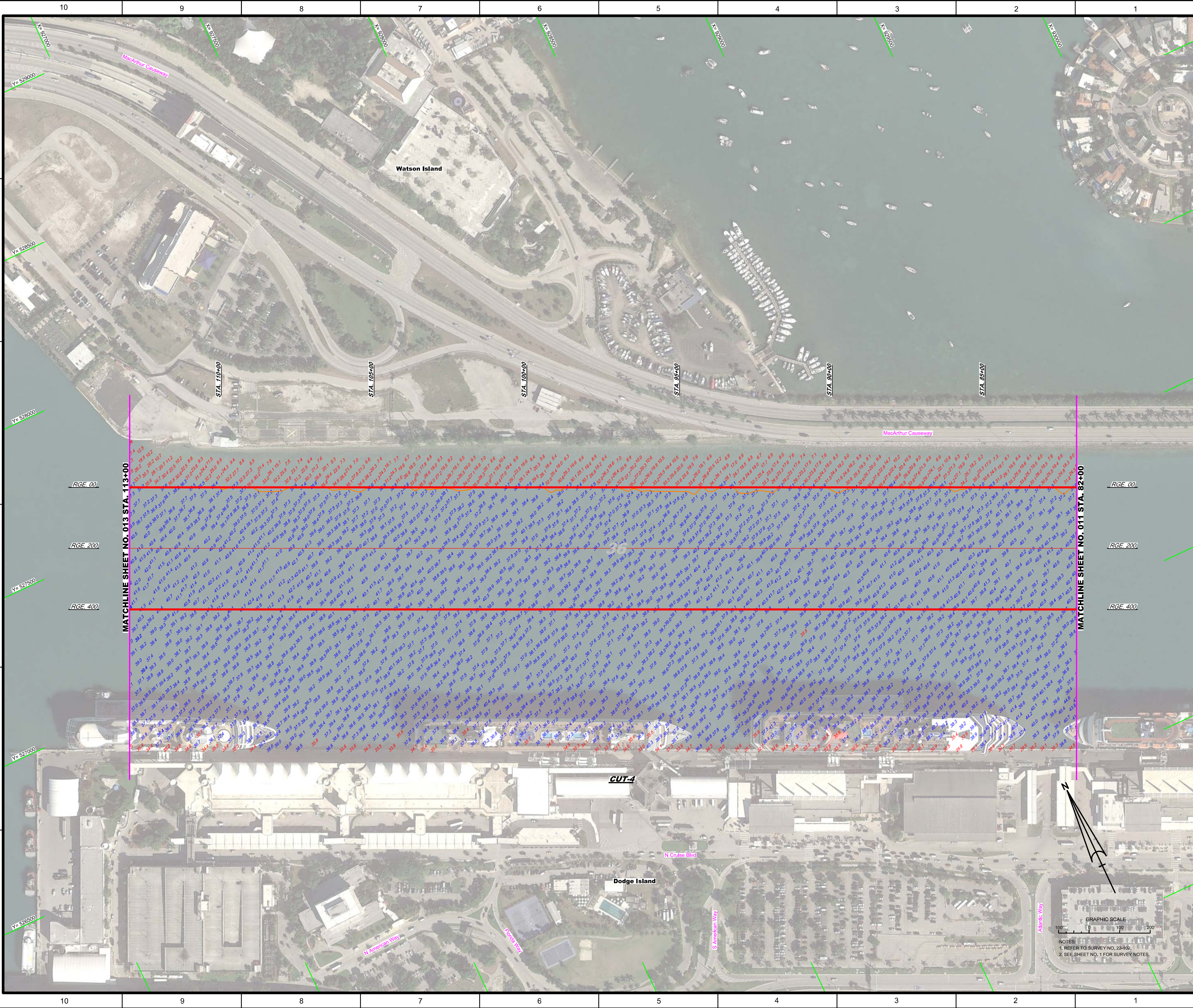


SAFETY ON THIS JOB
DEPENDS ON YOU

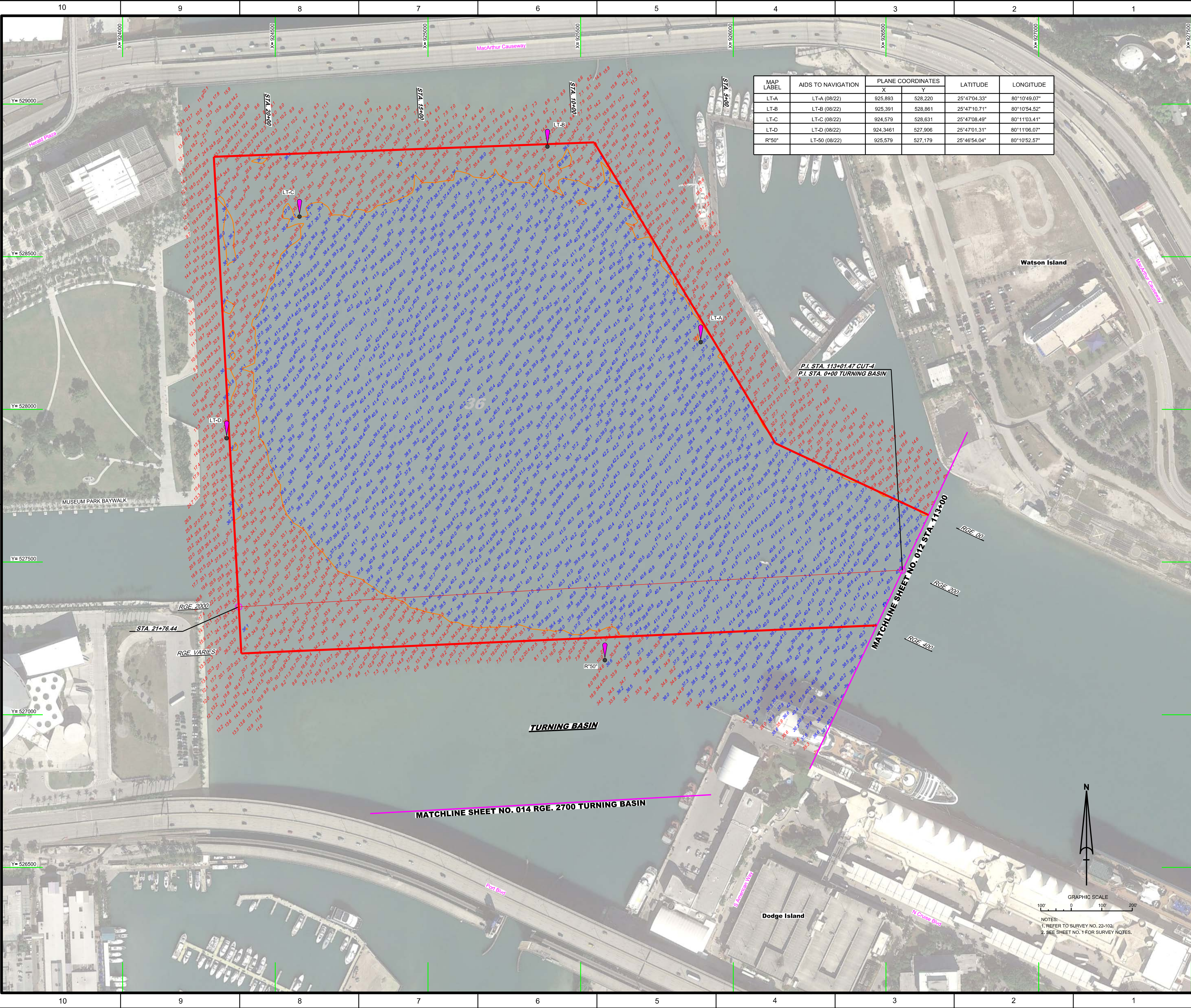
DEPARTMENT OF THE ARMY
JACKSONVILLE DISTRICT, CORPS OF ENGINEERS
JACKSONVILLE, FLORIDA

DESIGNED BY: MAMI HARBOUR CANAL PROJECT
DRAWN BY: MAMI HARBOUR CANAL PROJECT
CHECKED BY: MAMI HARBOUR CANAL PROJECT
DATE: AUG 2022


MAMI HARBOUR
DADE COUNTY, FLORIDA
**HYDROGRAPHIC EXAM SURVEY FY22
35, 36, 50 AND 52-FOOT PROJECT**
STA. 53+00 THRU STA. 82+00 CUT-4
PLAN



GRAPHIC SCALE
 0 100 200
 NOTES:
 1. REFER TO SURVEY NO. 22-102,
 2. SEE SHEET NO. 1 FOR SURVEY NOTES.



MAP LABEL	AIDS TO NAVIGATION	PLANE COORDINATES		LATITUDE	LONGITUDE
		X	Y		
LT-A	LT-A (08/22)	925,893	528,220	25°47'04.33"	80°10'49.07"
LT-B	LT-B (08/22)	925,391	528,861	25°47'10.71"	80°10'54.52"
LT-C	LT-C (08/22)	924,579	528,631	25°47'08.49"	80°11'03.41"
LT-D	LT-D (08/22)	924,3461	527,906	25°47'01.31"	80°11'06.07"
R"50"	LT-50 (08/22)	925,579	527,179	25°46'54.04"	80°10'52.57"



US Army Corps of Engineers
Jacksonville District

SAFETY ON THIS JOB
DEPENDS ON YOU

DEPARTMENT OF THE ARMY
JACKSONVILLE DISTRICT, CORPS OF ENGINEERS
JACKSONVILLE, FLORIDA

Checked By: GHR
 Designed By: WRM
 Drawn By: WRM
 Title: AUG 2022
 Reference: STA. 113+00 CUT-4 THRU STA. 21+76.44 TURNING BASIN

MAMI HARBOR
 DADE COUNTY, FLORIDA
HYDROGRAPHIC EXAM SURVEY FY22
35, 36, 50 AND 52-FY PROJECT
 STA. 113+00 CUT-4 THRU STA. 21+76.44 TURNING BASIN
PLAN

Scale: AS SHOWN

Drawing no. **13**

SHEET 13 OF 18



GRAPHIC SCALE
100' 0 100' 200'

NOTES:
1. REFER TO SURVEY NO. 22-102.
2. SEE SHEET NO. 1 FOR SURVEY NOTES.



MAP LABEL	AIDS TO NAVIGATION	PLANE COORDINATES		LATITUDE	LONGITUDE
		X	Y		
NO WAKE	SIGN (08/22)	926,062	524,725	25°46'29.70"	80°10'47.46"

MATCHLINE SHEET NO. 013 RGE. 2700 TURNING BASIN

MATCHLINE SHEET NO. 018 STA. 36+00

NO DATA COLLECTED

NO WAKE



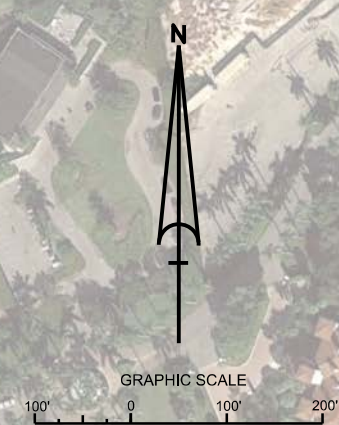
NOTES:
 1. REFER TO SURVEY NO. 22-102.
 2. SEE SHEET NO. 1 FOR SURVEY NOTES.

US Army Corps of Engineers
 Jacksonville District
 SAFETY ON THIS JOB DEPENDS ON YOU


<p>DEPARTMENT OF THE ARMY JACKSONVILLE DISTRICT, CORPS OF ENGINEERS JACKSONVILLE, FLORIDA</p>	<p>Call by: GMR Designed by: WRM DTM by: WRM File No.: 22-102-GS-BS-RI0A.DGN Date: AUG 2022</p>
<p>MAMI HARBOR DADE COUNTY, FLORIDA HYDROGRAPHIC EXAM SURVEY FY22 35, 36, 50 AND 52-FOOT PROJECT WEST BERTHING AREA PLAN</p>	
<p>Scale: AS SHOWN Drawing no. 14</p>	
<p>SHEET 14 OF 18</p>	



MAP LABEL	AIDS TO NAVIGATION	PLANE COORDINATES		LATITUDE	LONGITUDE
		X	Y		
G-5	LT-5 (08/22)	935.625	520.984	25°45'52.05"	80°09'03.12"
NO WAKE	SIGN (08/22)	936.201	520.743	25°45'49.63"	80°08'56.83"
NO WAKE	SIGN (08/22)	936.070	520.070	25°45'42.97"	80°08'58.31"
NO WAKE	SIGN (08/22)	936.376	520.133	25°45'43.58"	80°08'54.97"
NO WAKE	SIGN (08/22)	936.276	520.315	25°45'45.39"	80°08'56.05"



NOTES:
 1. REFER TO SURVEY NO. 22-102,
 2. SEE SHEET NO. 1 FOR SURVEY NOTES.

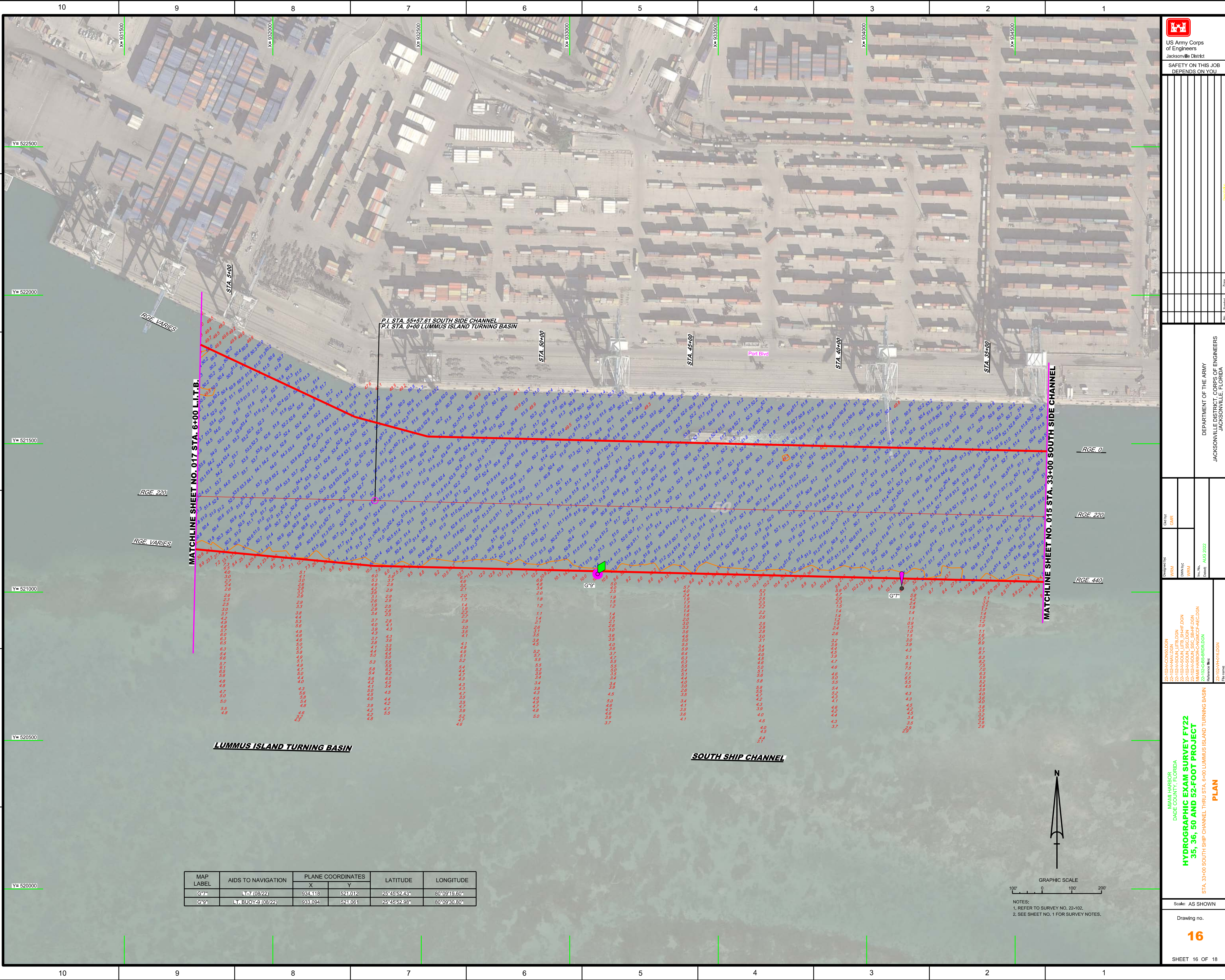


US Army Corps of Engineers
 Jacksonville District
 SAFETY ON THIS JOB
 DEPENDS ON YOU

DEPARTMENT OF THE ARMY
 JACKSONVILLE DISTRICT, CORPS OF ENGINEERS
 JACKSONVILLE, FLORIDA

Hydrographic Exam Survey FY22
 35, 36, 50 AND 52-FOOT PROJECT
 STA. 8+00 THRU STA. 33+00 SOUTH SHIP CHANNEL
PLAN

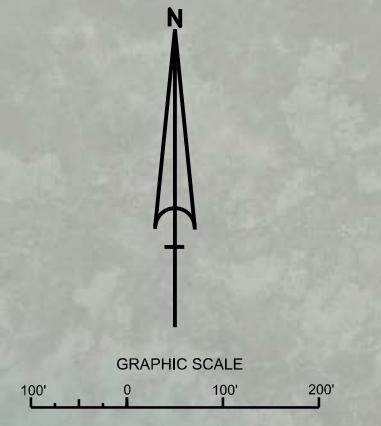
Scale: AS SHOWN
 Drawing no.
15
 SHEET 15 OF 18



US Army Corps of Engineers
 Jacksonville District
SAFETY ON THIS JOB DEPENDS ON YOU

Department of the Army
 Jacksonville District, Corps of Engineers
 Jacksonville, Florida

MAP LABEL	AIDS TO NAVIGATION	PLANE COORDINATES		LATITUDE	LONGITUDE
		X	Y		
G-7*	LT-7 (08/22)	934,118	521,012	25°45'52.43"	80°09'19.60"
G-9*	LT. BUOY-9 (08/22)	933,094	521,061	25°45'52.98"	80°09'30.80"



NOTES:
 1. REFER TO SURVEY NO. 22-102.
 2. SEE SHEET NO. 1 FOR SURVEY NOTES.

22-102-A-C-000-D-00N
 22-102-A-H-V-D-00N
 22-102-A-S-00-L-T-B-D-00N
 22-102-A-S-00-L-T-B-S-H-F-D-00N
 22-102-A-S-00-L-S-S-C-D-00N
 22-102-A-S-00-L-S-S-C-D-00N
 22-102-C-00-00-C-A-C-E-00N
 22-102-C-00-00-00-C-E-00N
 MAMI HARBOR
 22-102-C-00-00-00-C-E-00N
 Reference files
 22-102-H-01-L-D-00N
 File name:

Designed by: WRM
 Checked by: GHR
 Drawn by: WRM
 Date: AUG 2022

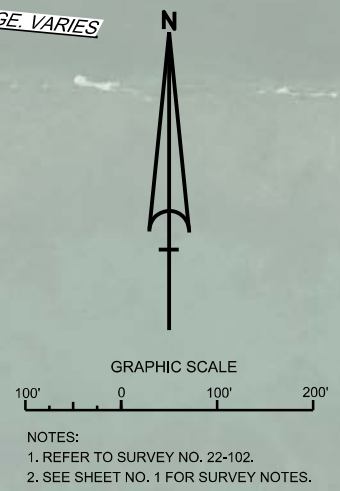
**HYDROGRAPHIC EXAM SURVEY FY22
 35, 36, 50 AND 52-FOOT PROJECT**
 STA. 33+00 SOUTH SHIP CHANNEL THRU STA. 6+00 LUMMUS ISLAND TURNING BASIN
PLAN

Scale: AS SHOWN
 Drawing no.
16
 SHEET 16 OF 18

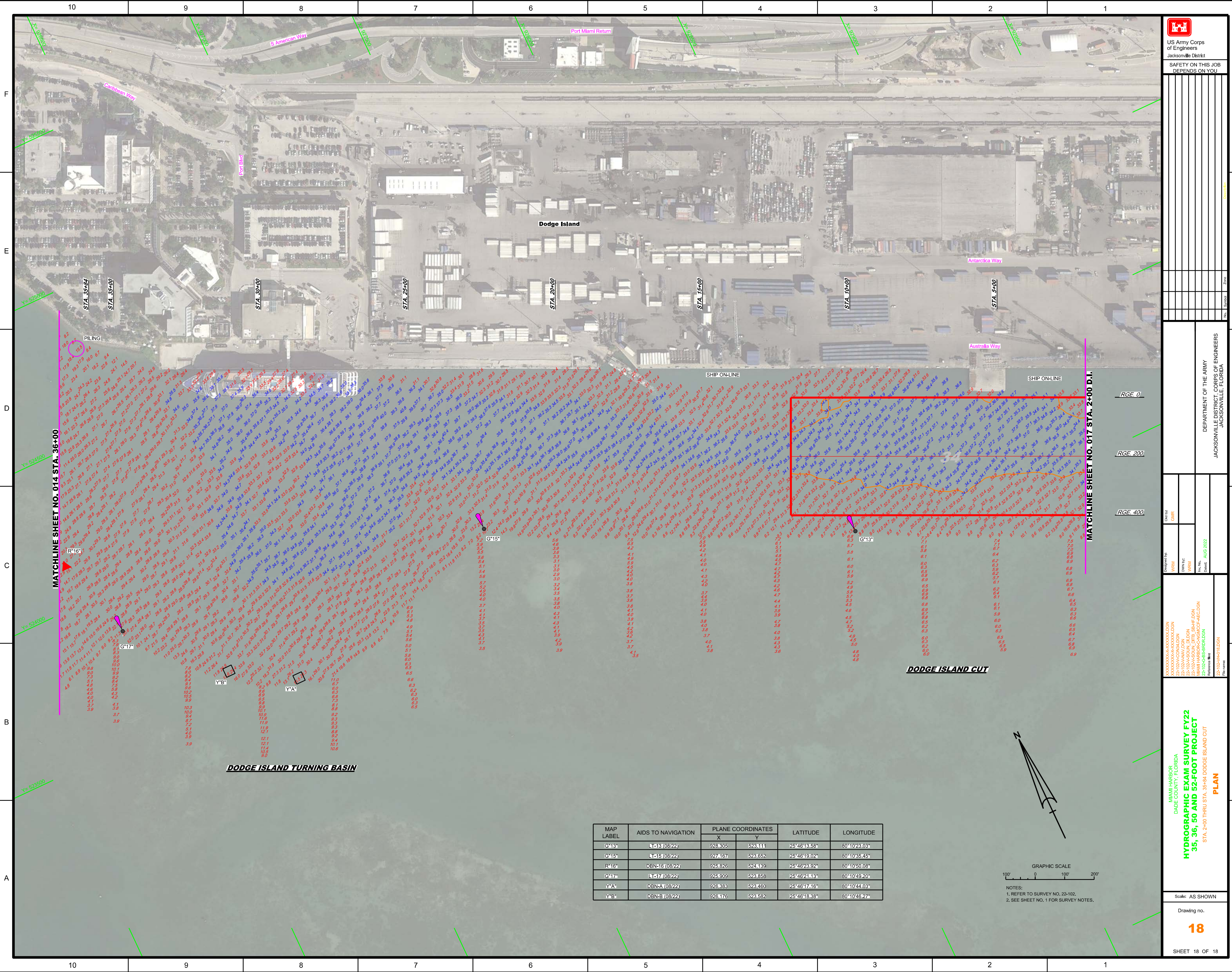


MAP LABEL	AIDS TO NAVIGATION	PLANE COORDINATES		LATITUDE	LONGITUDE
		X	Y		
G11*	LT-11 (08/22)	929,174	522,672	25°46'09.22"	80°10'13.56"
YA*	LT-A (08/22)	931,382	521,158	25°45'54.05"	80°09'49.51"
YB*	LT-B (08/22)	930,596	521,129	25°45'53.82"	80°09'58.41"
YC*	LT-C (08/22)	929,683	521,172	25°45'54.28"	80°10'08.09"
YD*	LT-D (08/22)	929,262	521,592	25°45'58.48"	80°10'12.67"
YE*	LT-E (08/22)	926,144	522,004	25°46'02.56"	80°10'13.94"
NO ENTRY	SIGN (08/22)	931,156	520,944	25°45'51.91"	80°09'46.98"

 US Army Corps of Engineers Jacksonville District SAFETY ON THIS JOB DEPENDS ON YOU	
Project: 22-102-ANV-DON Drawn: 22-102-ANV-DON Design: 22-102-ANV-DON Date: 08/2022	Department of the Army Jacksonville District, Corps of Engineers Jacksonville, Florida
MAMI HARBOR DADE COUNTY, FLORIDA HYDROGRAPHIC EXAM SURVEY FY22 35, 36, 50 AND 52-FOOT PROJECT STA. 0+00 THRU STA. 27+00 LUMMUS ISLAND TURNING BASIN & STA. 0+00 THRU STA. 5+00 DODGE ISLAND	Scale: AS SHOWN Drawing no. 17 SHEET 17 OF 18



NOTES:
 1. REFER TO SURVEY NO. 22-102.
 2. SEE SHEET NO. 1 FOR SURVEY NOTES.



US Army Corps of Engineers

 Jacksonville District

 SAFETY ON THIS JOB

 DEPENDS ON YOU

DEPARTMENT OF THE ARMY

 JACKSONVILLE DISTRICT, CORPS OF ENGINEERS

 JACKSONVILLE, FLORIDA

Call by: GHR

 Designed by: WRM

 Drawn by: WRM

 Checked by: WRM

 Date: AUG 2022

MAMI HARBOR

 DADE COUNTY, FLORIDA

HYDROGRAPHIC EXAM SURVEY FY22

35, 36, 50 AND 52-FOOT PROJECT

 STA. 2+00 THRU STA. 35+84 DODGE ISLAND CUT

PLAN

MAP LABEL	AIDS TO NAVIGATION	PLANE COORDINATES		LATITUDE	LONGITUDE
		X	Y		
G415	LT13 (08/22)	928,905	923,111	25°48'13.58"	80°10'23.03"
G416	LT15 (08/22)	927,467	923,652	25°48'19.02"	80°10'35.45"
R416	DBN-16 (08/22)	925,826	924,189	25°48'24.92"	80°10'50.08"
G117	LT17 (08/22)	925,909	923,858	25°48'24.13"	80°10'49.20"
Y41A	DBN-A (08/22)	926,383	923,460	25°48'17.16"	80°10'44.03"
Y41B	DBN-B (08/22)	926,176	923,582	25°48'18.38"	80°10'46.27"



GRAPHIC SCALE

 100' 0 100' 200'

 NOTES:

 1. REFER TO SURVEY NO. 22-102.

 2. SEE SHEET NO. 1 FOR SURVEY NOTES.